

THE VILLAGE AT BENTLEY PARK HOA

The Board of Directors has adopted Hurricane Shutter Specifications for the community. Your copy of the specifications is included with this mailing and is to be filed along with your documents and other rules for The Village.

A word concerning the shutter specifications is believed necessary to give some guidance to owners wishing to install hurricane protection.

Members of the Board spoke with two (2) vendors prior to the meeting in order to look at samples of the protective devices currently available as well as to get some feel for costs. Those companies were Home Safety Solutions, Inc. in Oldsmar (813) 814-2236 and All Florida Stormprotection, Inc. in Palm Harbor (727) 512-0435. The Board voted to pass along information relative to costs for your benefit as an owner and member of the community.

A permanent, screen-type installation is available and is recommended as the most resistant to winds. The frame is bolted onto the siding with the screens already installed. Estimated cost for this type is approximately \$60.00 per square foot, installed.

Another permanent installation, the accordion-type, is also bolted onto the siding and the panels fold and store to the sides of the opening when not in use and is locked from inside. Estimated cost is approximately \$28.00 per square foot, installed.

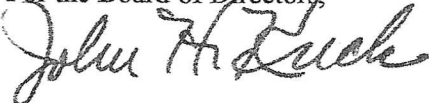
A third type of protection, newer to the market, is the soft-sided protection. These are available in a vinyl-type finish and more recently a mesh product. Both are installed with grommets and wing nuts and the material itself may only be hung during periods of storm watch. Cost for this type product runs from \$9.00 to \$13.00 per square foot.

The Board debated color selection and decided that a white finish is the only acceptable color for our villas with the exception being our tan villas where a beige protective device is the accepted color.

For installations other than the permanent screen-type shutters, the time limit for installation or closing (accordion-type) is 72 hours prior to a storm warning with removal or opening required within 72 hours after the storm.

Please note: All shutter devices require a written request to the Architectural Committee prior to installation; the request must specify the type to be installed. All requests are to be mailed to management for referral to the Committee. Thank you.

For the Board of Directors,



John H. Krick, LCAM
Integrity Assn Mgt

May 9, 2007

Specifications for Hurricane Shutters for the villas of Bentley Park

**Example of permanent accordion bolted on.
These may be left closed if you are "snowbirds"**

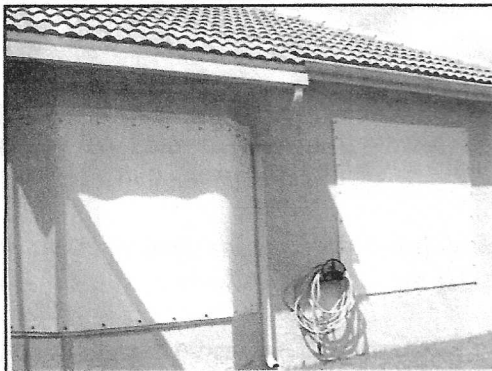


closed



open

**Example of soft sided removable panels
Some companies will put up, take down and store for a fee.**



on



off

Color: Beige only for tan villas. All other villas to be white only.

Time Limits of all Removable Panels: Put up 72 hours prior. Removal to be with in 72 hours of hurricane event.

**Approval: All installations require approval by the Architectural Committee.
All requests should be sent to Integrity Management and must specify type of installation.**